

Toilet partition walls

Cubicle systems

Shower partition walls

Hand basin counters

Lockers

W e t a r e a s , c o l o u r f u l s o l u t i o n s



b l o c k **k** *System*

NESER GROUP

build | sales | green

BLOKK System products are manufactured and distributed by Neser Group Kft.

CONTENTS

Toilet partition walls	4
L18	6
L18 kindergarten wall	8
L18 school wall	8
L30	9
N13	10
S13	12
Glass – new product	14
Clip panel – new product	15
Wall panel – new product	16
Cubicle systems	18
ÖK valto	20
ÖK normal	21
Shower partition walls	22
ZN 13	24
DZ 8	25
Hand basin counters	26
S-compact	28
Alulami	28
Technistone	29
Lockers	30
Lamo 18	32
Compact 13	33

With the BLOKK System products, everyone can create their own colourful 'wet' world.

We believe that such an environment can be easily created with the quality of our products, the colours of our raw materials, as well as the continuous developments we perform.

Neser Group team

Toilet partition walls

L18

L18 kindergarten wall

L18 school wall

L30

N13

S13

Glass – new product

Clip panel – new product

Wall panel – new product

L18

Unlimited colour options,
fast delivery

toilet partition wall



45.000 HUF/block
184 EUR/unit



Panel:

18 mm thick MFC board. The edges are covered by ABS. Panel colours: can be selected from colour chart.

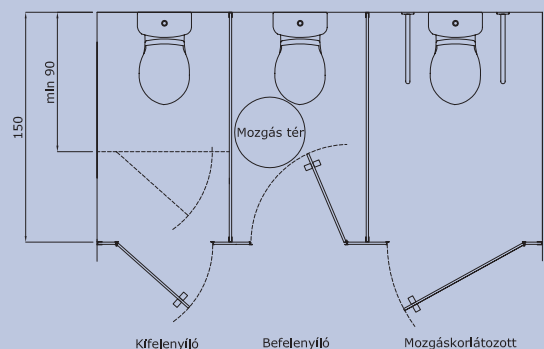
Frame structure:

It is made of aluminium profiles and the surfaces are treated by electrostatic powder paint. Impact-damping rubber lining is incorporated into the casing profile. Standard RAL: 9006. For request other RAL colours are also possible.

Lead time of manufacturing:

1 week after order confirmation.

Dimensions:



T-design



L-design



FK-design



U-design



The above ex works price does not include installation, transportation and VAT. It is applicable to standard T-design cabins. Dimensions of the cabin: 1,200x900 mm, in outswinging design. The panel and profile colour is white or grey.



L18

Lovely shapes,
happy design

kindergarten wall



56.000 HUF/block
229 EUR/unit

Structure:

We developed this wall based on the advantage of the wide colour range of L18 partition wall. The elements of this wall is the same as the elements of L18, but the height and the shape of the doors are different.

For more information, please, contact us!

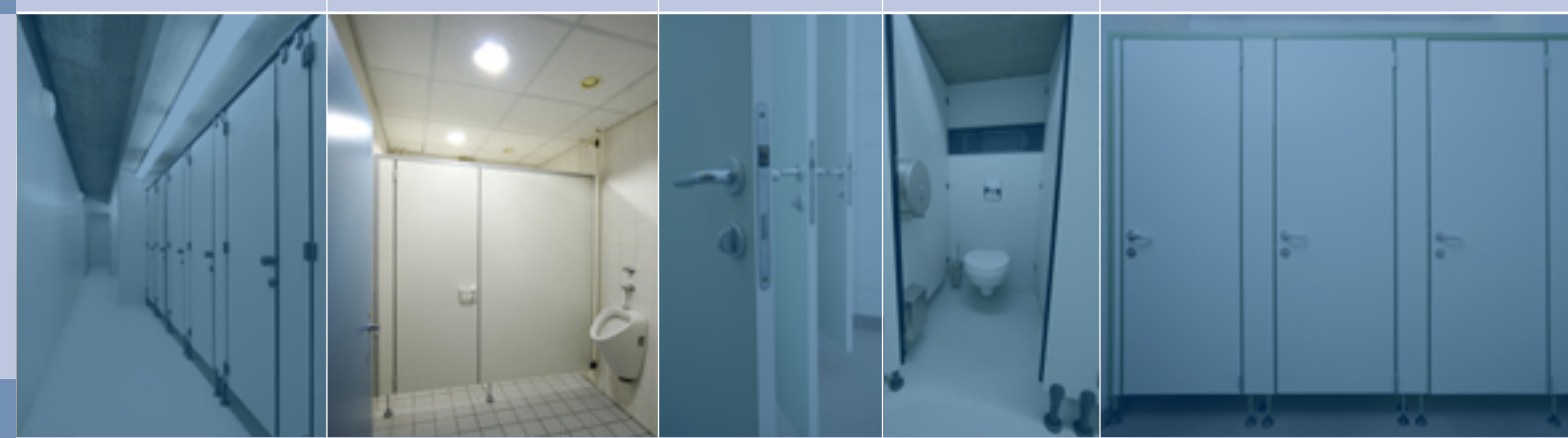
The above ex works price does not include installation, transportation and VAT. It is applicable to standard T-design cabins. Dimensions of the cabin: 1,200x900 mm, in outswinging design. The panel is white or grey MFC. The colour of the profiles and fittings is white or grey.

L18

Trendy world

Take your chance, create surfaces!

school wall



Structure:

Individual Dekor gives a nice appearance to school walls. By using this material the designers can have their dreams come true. Due to the manufacturing procedures any colours, photos or shapes that were designed by the architects can come true on the surface of the MFC or compact surfaces.

For more information, please, contact us!

Project prices!
Please, contact us!

Sample express:

Please, request our sample partition wall!



The cabins can be linked up in an unlimited number. Due to the profile family used, any angle can be designed, and special arched layouts can be implemented.



L30

Stability, design with door handle

toilet partition wall



Panel:

30 mm thick MFC board. The edges are covered by ABS. Standard colours: white (W911), grey (U708).

Frame structure:

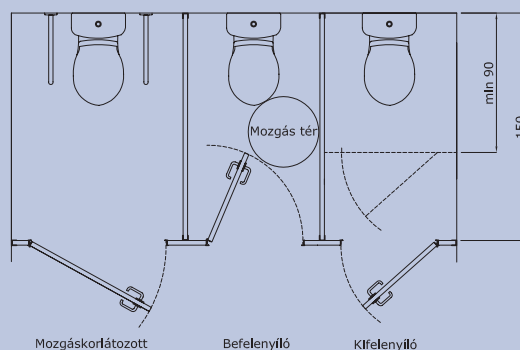
It is made of aluminium profiles and the surfaces are treated by electrostatic powder paint. The door frame profiles have protection rubbers against banging. Standard RAL: 9006. For request other RAL colours are also possible.

Lead time of manufacturing:

3-4 weeks

61.000 HUF/block
249 EUR/unit

Dimensions:



T-design

L-design

FK-design

U-design



The above ex works price does not include installation, transportation and VAT. It is applicable to standard T-design cabins. Dimensions of the cabin: 1,200x900 mm, in outswinging design. The panel and profile colour is white or grey.

N13

High hygiene, lifetime guarantee

toilet partition wall



135.000 HUF/block
551 EUR/unit

Panel:

13 mm thick, water-resistant compact sheet.

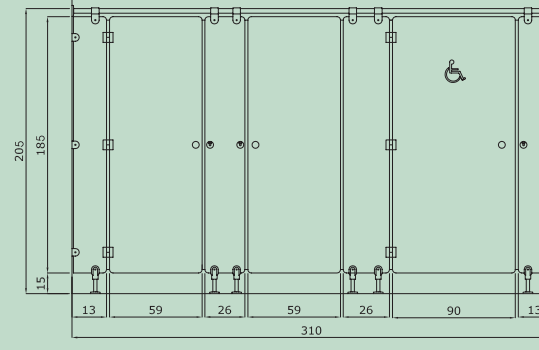
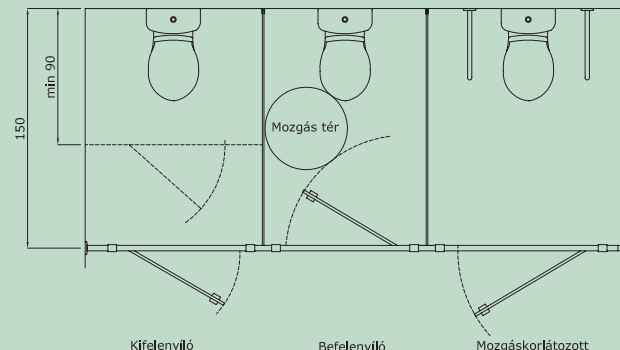
Frame structure:

The frame structure and the connecting elements are made of galvanized steel with PA-Poliamid (nylon) finish in white colour (Normbau 18). Therefore the structure has big stability and is easy to handle. Light-, heat- and weather resistant. It is highly resistant against chemicals, cleaning and antiseptic materials. It has long-life, wide range of colour options and no electrostatic charging.

Lead time of manufacturing:

3-4 weeks

Dimensions:



T-design

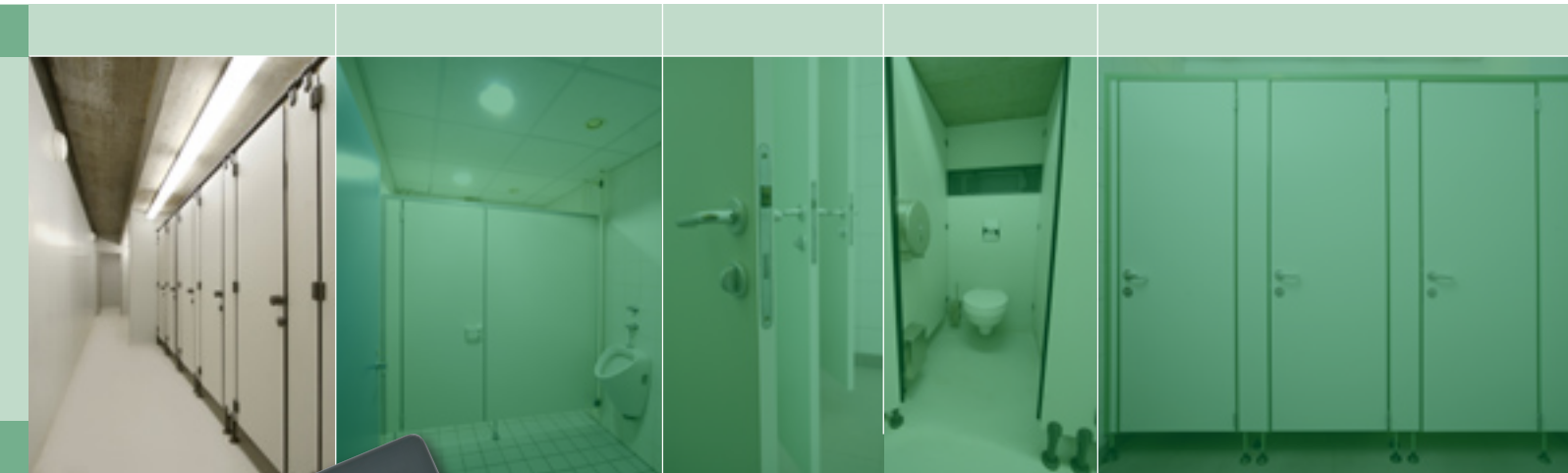
L-design

FK-design

U-design



The above ex works price does not include installation, transportation and VAT. It is applicable to standard T-design cabins. Dimensions of the cabin: 1,200x900 mm, in outswinging design. The panel is made of white or grey compact sheets. The profiles and fittings can be selected from colour chart.



Handicapped fittings:

The cabins can be linked up in an unlimited number. Due to the profile family used, any angle can be designed, or special arched layouts can be implemented.

Please, request our detailed catalogue!



S13 *Elegance, high-quality*

toilet partition wall



155.000 HUF/block
633 EUR/unit



Panel:

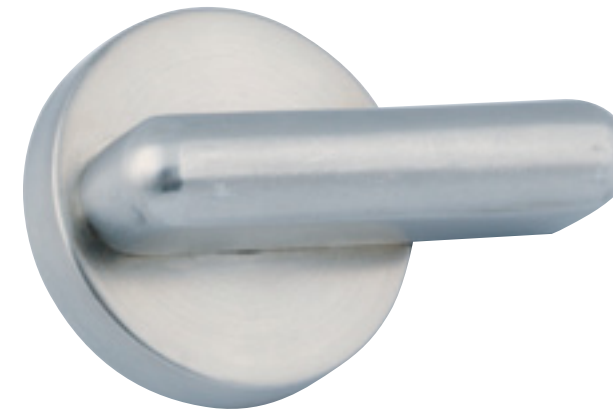
13 mm thick, water-resistant compact sheets.

Frame structures, fittings:

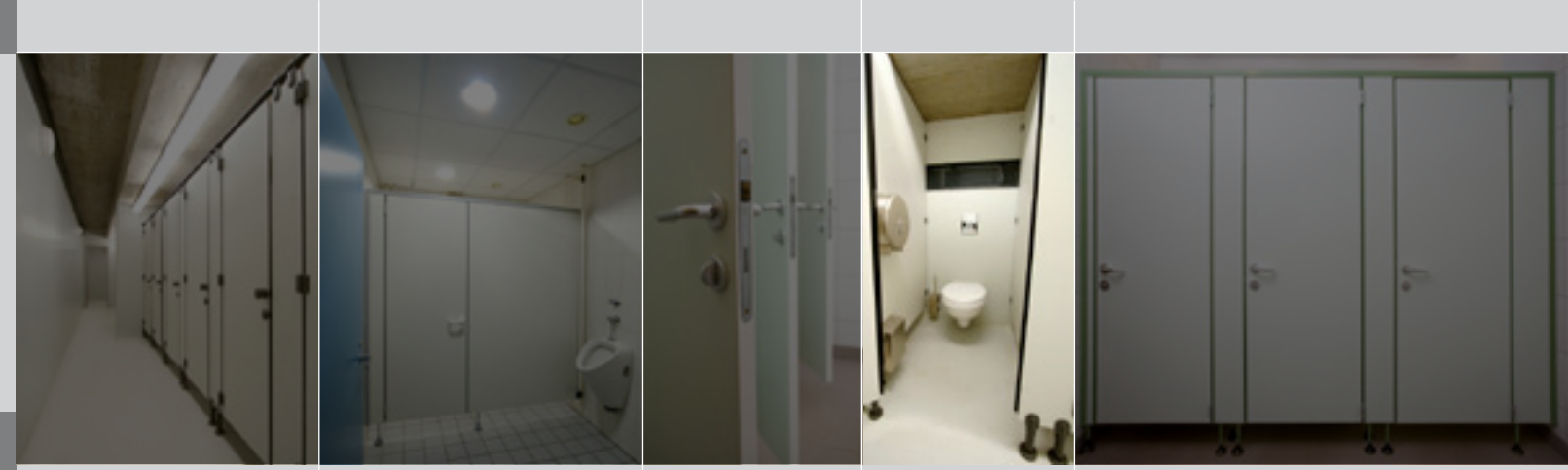
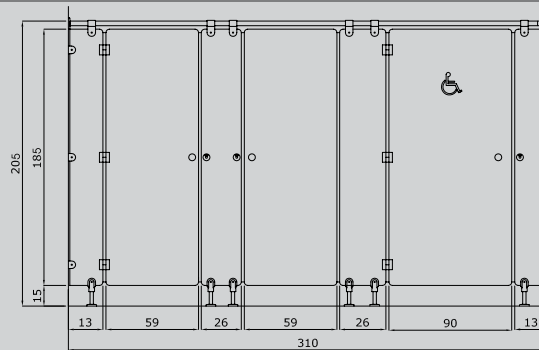
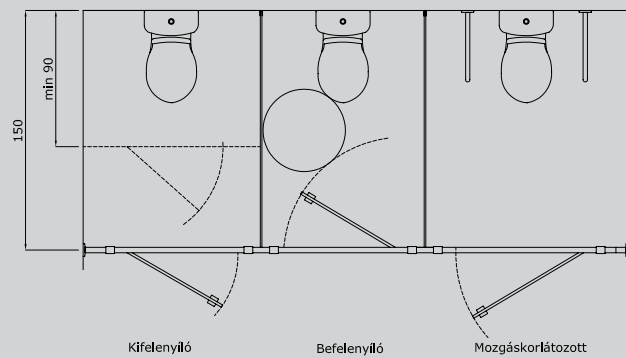
They are made of stainless steel, which offers unlimited lifetime, elegance and enhanced stability to the structures.

Lead time of manufacturing:

3-4 weeks



Dimensions:



T-design

L-design

FK-design

U-design



The cabins can be linked up in an unlimited number. Due to the profile family used, any angle can be designed, or special arched layouts can be implemented.

Sample express:

Please, request our sample partition wall!



The above ex works price does not include installation, transportation and VAT. It is applicable to standard T-design cabins. Dimensions of the cabin: 1,200x900 mm, in outswinging design. The panel is of white or grey, 13-mm compact sheets. The profiles and fittings are of stainless steel materials.

Glass

*A new world,
new design*

toilet partition wall

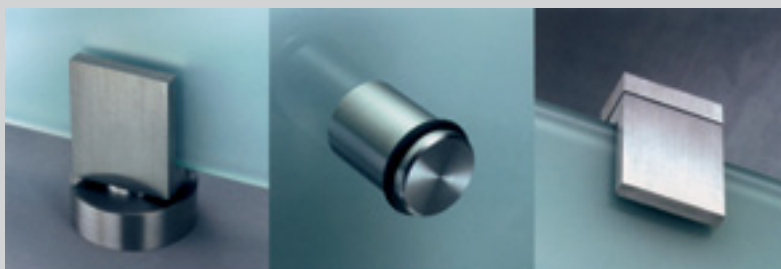


Project prices!
Please, contact us!



Product information:

The elements of this system are uniquely designed, stainless steel fittings and high-quality LSG safety glazing. With these elements, aesthetic and clearly creative solutions can be designed without compromises. Thus, the designers have the option to form new, interesting environments in sanitary and changing rooms. In addition to being hygienic, the use of glass results in exciting light effects.



For more information,
please, request our
catalogue!



Clip

*Servicing without
wall damage!*

panel



Technical information:

With the Clip panel system, non-destructive trouble-shooting can be executed in no time. The system offers an opportunity for the maintenance and servicing of engineering pipes that are covered by the wall panel.

The frame of the system is a high-strength steel or wooden structure between the floor and the ceiling. As depending on the demands, the materials of the panels can be HPL-coated laminated sheets, or compact sheets. Easy disassembly is guaranteed by special clips.

The footing is made with 15 cm high stainless steel coating.

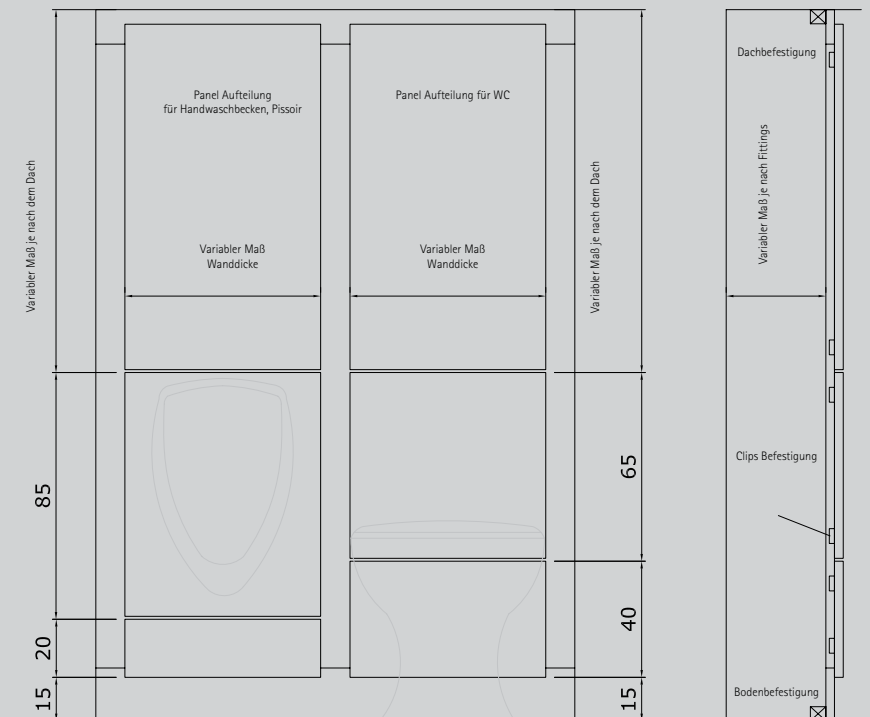
Project prices!
Please, contact us!



Clip element:



Technical data:



Wall Cladding in just a few minutes!

panel



Project prices!
Please, contact us!

Product information:

As a novelty, let us introduce You our Fibo Trespo panel system that features a ceramic tile effect, and make the cladding of the walls of sanitary facilities easier and quicker than with conventional techniques. The use of Fibo Trespo panels involves no need for jointing, drying times, no dirt or disorder occurs during the application. An additional, great advantage is that after application the given sanitary facilities can be immediately used. Fibo Trespo panel is a watertight membrane in wood-framed construction.

Panel dimensions:

11x620x2400 mm
11x1200x2400 mm

Design:

Varied colours, surfaces and patterns.

Lead time of delivery:

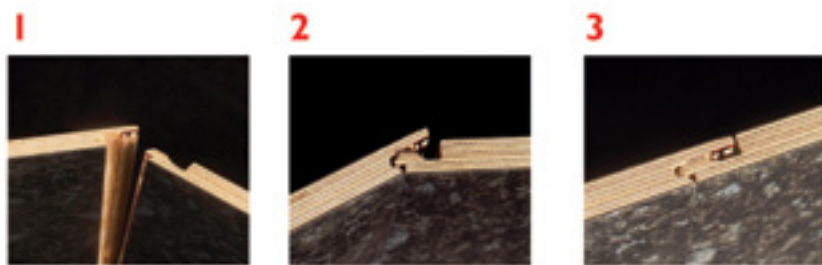
2-3 weeks after order

Please, ask for our product brochure!



Aqualock connection:

Special panel connection for proper water tightness.



Wall Cladding in just a few minutes!

panel



Fibo-Trespo veggpanel er godkjent i.h.t. Byggebransjens Våtromsnorm.



Fibo-Trespo veggpanel anbefales av Norges Astma- og Allergiforbund.



Fibo-Trespo veggpanel har NBI godkjenning.



Fibo-Trespo veggpanel leveres med Aqualock lås.



Fibo-Trespo veggpanel er CE-merket.

With the BLOKK System products, everyone can create their own colourful 'wet' world.

We believe that such an environment can be easily created with the quality of our products,
the colours of our raw materials, as well as the continuous developments we perform.

Neser Group team

Cubicle systems

ÖK valto

ÖK normal

ÖK valto

Cubicle system

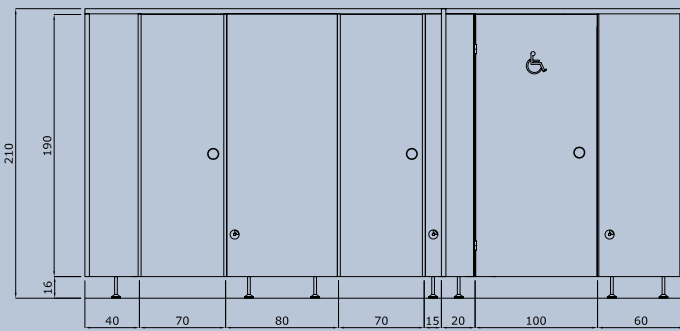


169.000 HUF/block
690 EUR/unit

Legs:

Legs are made from aluminum with adjustable height and surface finishing corresponding to the colour of the frame (RAL); anchored to the floor with plastic discs and covers. The height of the leg is 16 cm. Adjustment range: ± 2 cm.

Dimensions:



Frame structure:

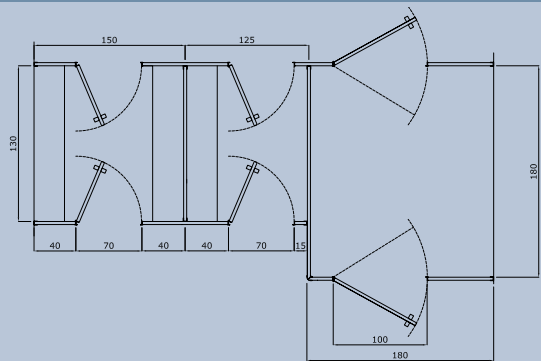
The raw material of structures making up the supporting frames of toilet partition walls is aluminium. Surface treatment is performed with electrostatic powder painting. Impact-damping rubber lining is incorporated into the casing profile.

The profiles of the supporting frame are 40 mm in width, and are suitable for the installation of 30 mm thick panels.

They are available in the colours of the RAL colour range.

Panel:

30 mm thick particle board laminated with melamine resin on both sides. E1 – they are made in quality complying with Standard DIN 68765, in several colours. The surfaces of the laminated boards are resistant to scratches, impacts and abrasion. The edges of the door panels, as well as the lower edges of the panel sheets are closed with ABS edge lathing.



Changing cabin

Lock

Occupancy indicator



Self-locking strap

Leg

The pricing of the cubicle systems largely depends on the technical specifications of the given project. For this reason, please, always ask for project prices. The above price is informative. Dimensions of the cabin: 1,250x1,200 mm. The panel is of white or grey, 30 mm MFC sheets. The profiles and fittings can be white or grey. The above ex works price does not include installation, transportation and VAT.

ÖK normal

Cubicle system



121.000 HUF/block
494 EUR/unit

Frame structure:

The raw material of structures making up the supporting frames of toilet partition walls is aluminium. Surface treatment is performed with electrostatic powder painting. Impact-damping rubber lining is incorporated into the casing profile. The profiles of the supporting frame are 40 mm in width, and are suitable for the installation of 30 mm thick panels. They are available in the colours of the RAL colour range.

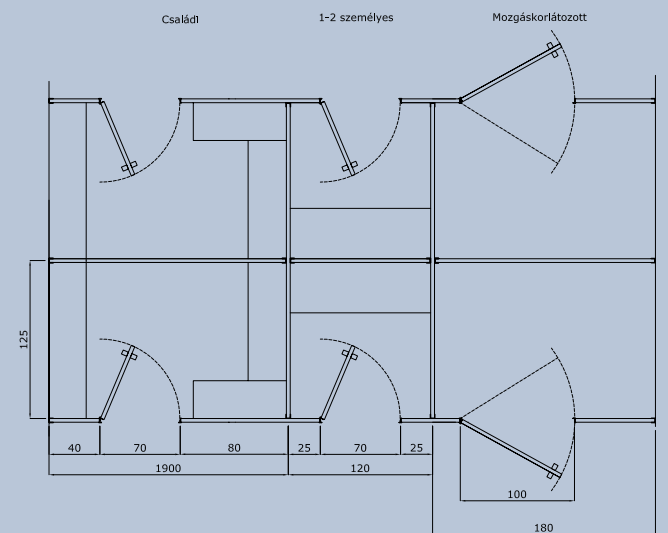
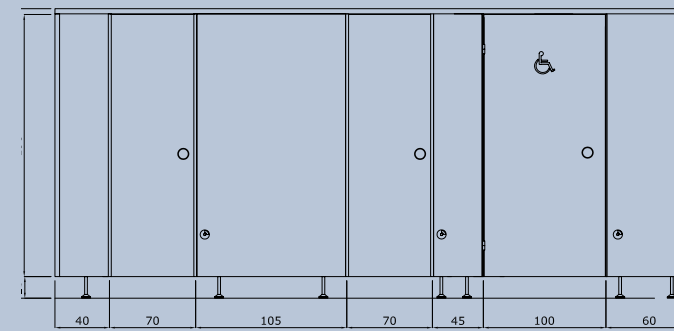
Panel:

30 mm thick particle board laminated with melamine resin on both sides. E1 – they are made in quality complying with Standard DIN 68765, in several colours. The surfaces of the laminated boards are resistant to scratches, impacts and abrasion. The edges of the door panels, as well as the lower edges of the panel sheets are closed with ABS edge lathing.

Legs:

Legs are made from aluminum with adjustable height and surface finishing corresponding to the colour of the frame (RAL); anchored to the floor with plastic discs and covers. The height of the leg is 16 cm. Adjustment range: ± 2 cm.

Dimensions:



The pricing of the cubicle systems largely depends on the technical specifications of the given project. For this reason, please, always ask for project prices. The above price is informative. Dimensions of the cabin: 1,250x1,200 mm. The panel is of white or grey, 30 mm MFC sheets. The profiles and fittings can be white or grey. The above ex works price does not include installation, transportation and VAT.

With the BLOKK System products, everyone can create their own colourful 'wet' world.

We believe that such an environment can be easily created with the quality of our products,
the colours of our raw materials, as well as the continuous developments we perform.

Neser Group team

Shower partition walls

ZN 13

DZ 8

ZN13

For spas, swimming pools

Shower partition wall



Frame structure:

Connection to the floor and walls are provided by polyamide-coated (nylon) fittings. The proper connection of the partition walls to each other is allowed by nylon-covered stainless steel pipes that also services as curtain valance.

Panel:

It is made from 13 mm watertight compact sheets.

Lead time of manufacturing:

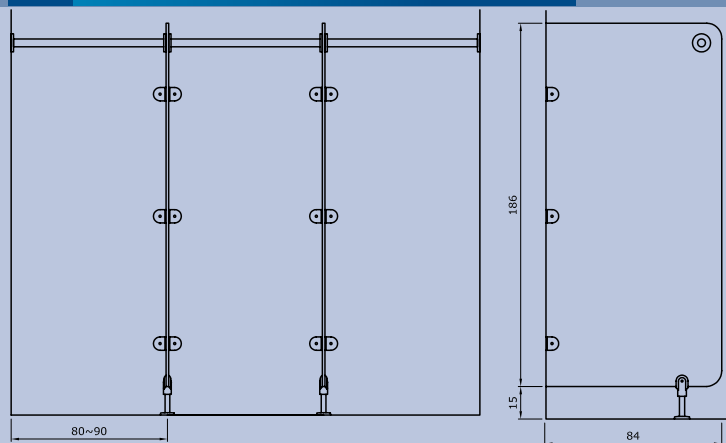
3-4 weeks

Shower cabin door:

Upon any request, the ZN13 system can be installed with a door, as well.

79.000 HUF/block
323 EUR/unit

Dimensions:



Panel properties:

- fully water-resistant
- resistant to pressure and breakage
- resistant to water, heat, steam and frost
- resistant to scratches
- easy to clean
- resistant to acids and lye
- hygienic surfaces



Colour range:



Available accessories:

- handrails
- soap dishes
- shower curtains

The above ex works price does not include installation, transportation and VAT. It is applicable to standard T-design units. Dimensions of the panel: 800x1,860 mm. The panel is of white or grey, 13-mm compact sheets. The colours of the profiles and fittings can be selected from the available colour range.

ZD8

For factories and plants

Shower partition wall



Frame structures, fittings:

They are made from anodized profiles with stainless steel legs. The structural elements allow proper connection between the floor and ceiling. For this reason, no horizontal buttressing is needed.

Panel:

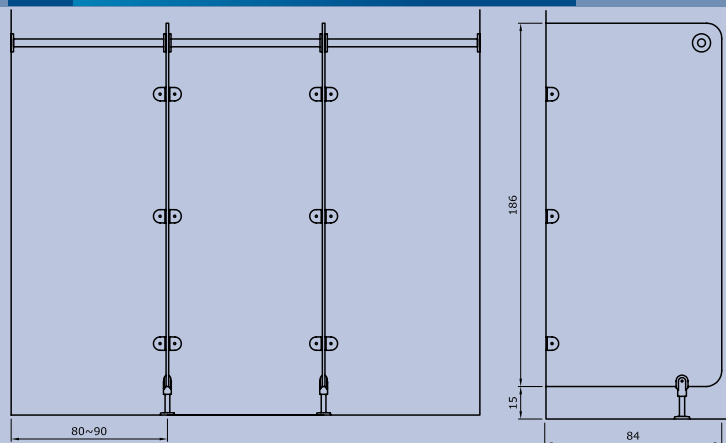
It is made from 8 mm thick, water-resistant compact sheets.

Lead time of manufacturing:

1 week

59.000 HUF/block
240 EUR/unit

Dimensions:



Panel properties:

- fully water-resistant
- resistant to pressure and breakage
- resistant to water, heat, steam and frost
- resistant to scratches
- easy to clean
- resistant to acids and lye
- hygienic surfaces



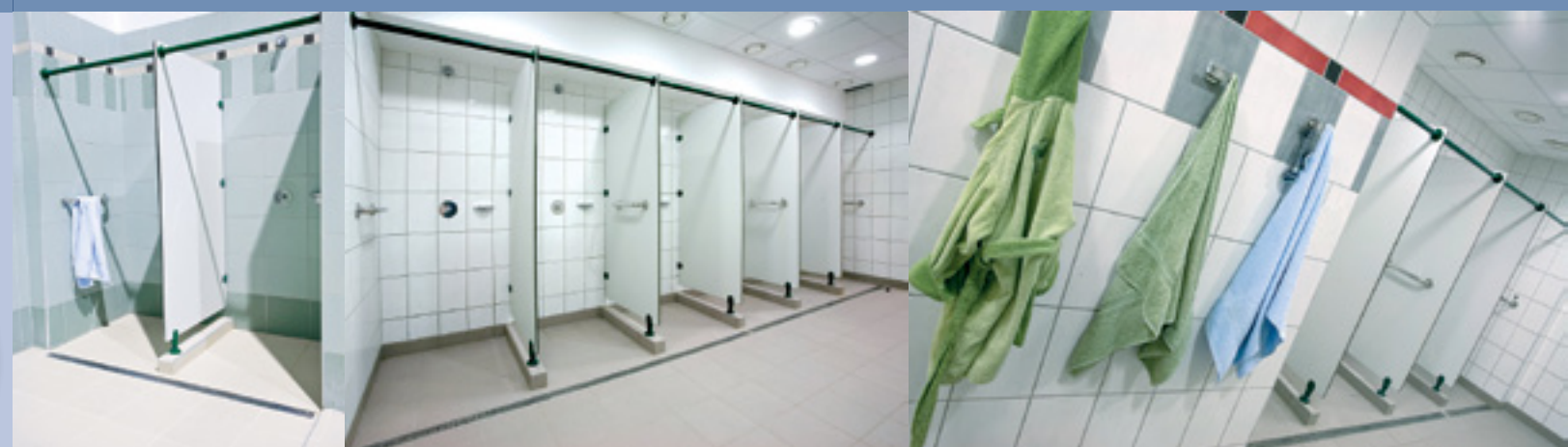
Colour range:



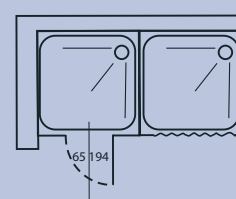
Available accessories:

- handrails
- soap dishes
- shower curtains

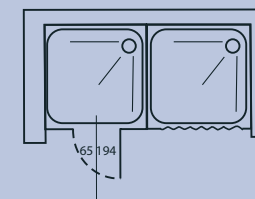
The above ex works price does not include installation, transportation and VAT. It is applicable to standard T-design units. Dimensions of the panel: 800x1,860 mm. The panel is of white or grey, 8 mm compact sheets. The profiles and fittings are made of anodized aluminium.



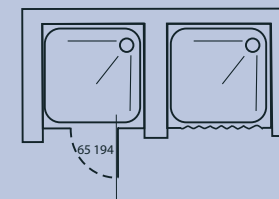
L-design



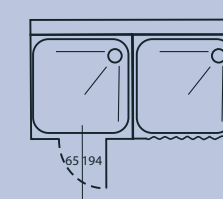
T-design



FK-design



U-design



The above ex works price does not include installation, transportation and VAT. It is applicable to standard T-design units. Dimensions of the panel: 800x1,860 mm. The panel is of white or grey, 8 mm compact sheets. The profiles and fittings are made of anodized aluminium.

With the BLOKK System products, everyone can create their own colourful 'wet' world.

We believe that such an environment can be easily created with the quality of our products,
the colours of our raw materials, as well as the continuous developments we perform.

Neser Group team



Hand basin counters

S-compact

Alulami

Technistone

S-compact

Hand basin counter



24.000 HUF/m
98 EUR/m

Description:

The counter is 13 mm thick. Its base material is compact sheet. Long lifetime and perfect water-resistance are ensured by its being bent from the same material. The counter is easy to clean, and complies with high hygienic requirements. It is fixed with steel brackets.



Technistone

Hand basin counter



34.500 HUF/m
141 EUR/m

Technical description:

Technistone quartz-granite sheets are manufactured with the state-of-the-art Bretonstone technology. The constituents include the grinds of various types of granite and natural stones, quartz sand, glass and mica particles, dyeing pigments and epoxy-based artificial resin to offer extraordinary strength.

The sheets, their perfect surfaces are created as a result of a very long and complex working process, and become a high-quality base material that can be used for a wide range of purposes. The state-of-the-art technology in fact borrows the best available quality to Technistone materials in comparison to granite and other natural stones.

Properties:

1. harder than granite
2. resistant to scratches
3. resistant to acids
4. not porous (in contrast with natural stones)
5. not demanding continuous, follow-up treatment
6. very easy to clean with any kitchen detergent
7. not containing points of stress
8. 42 colour available from 5 colour families
9. the same colour is available in 3 different thicknesses: 12 mm, 20 mm, 30 mm
10. ALL surfaces of any apartment can be created from Technistone sheets!
11. firm and professional national distribution network
12. 10 years of guarantee

Alulami

Hand basin counter



13.500 HUF/m
55 EUR/m

Description:

The counter is 13 mm thick with aluminum edge profiles. The advantage of the system is the availability of a selection of base materials, as well as durable edge closing. It is fixed with steel brackets.

MFC hand basin profiles:

6.000 Ft/m-töl



4.500 Ft/m-töl



With the BLOKK System products, everyone can create their own colourful 'wet' world.

We believe that such an environment can be easily created with the quality of our products,
the colours of our raw materials, as well as the continuous developments we perform.

Neser Group team

Lockers

Lamo 18

Compact 13

Lamo 18

Locker

Wide range of colours, knocked-down structure.

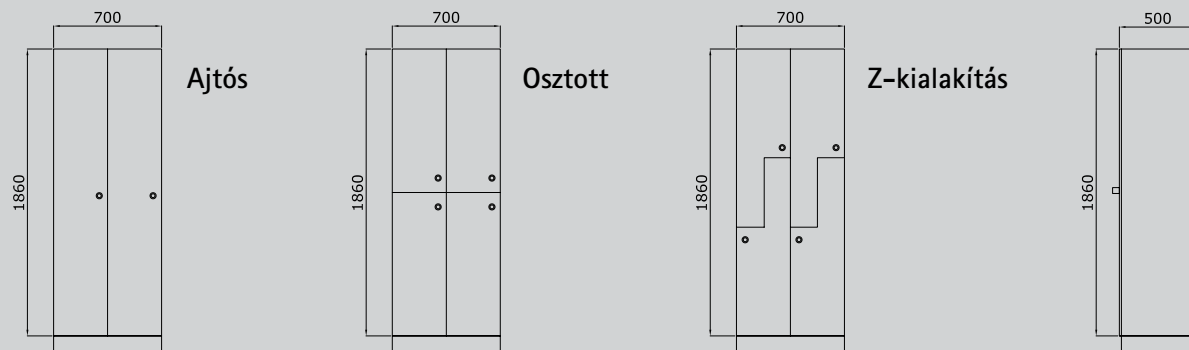
Structure:

The corpus and the back-wall are made from 18 mm laminated sheets. The front surface of the door is from 16 mm painted MDF sheets. The fittings allow the supply of knocked-down design. Various alternatives for locking are provided (lock ears, keys, coin locks). The doors are opened around hinges opening in 180 degrees. The lockers can be manufactured with legs or for pre-fabricated footing.



Please, ask for our price list!

Types of designs:



Benches:



Com 13

Locker

High durability, long lifetime.

Structure:

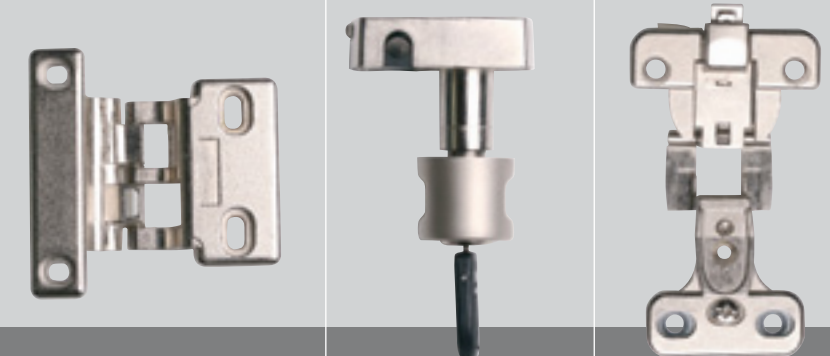
The corpus and the back-wall are made from 13 mm compact sheets. The door is from 10 mm compact sheets. The fittings allow the supply of knocked-down design. Various alternatives for locking are provided (lock ears, keys, coin locks). The doors are opened around object hinges opening in 180 degrees. The lockers can be manufactured with legs or for pre-fabricated footing.



Colour samples:



Fittings:



W e t a r e a s , c o l o u r f u l s o l u t i o n s



Your dealer:

Trimbelt-Max 27 Kft.

H-4200 Hajdúszoboszló, Vadas u. 40.

Mobil: (+36) 30-326-2996

Tel.: (+36) 52/610-612

Fax.: (+36) 52/611-621

E-mail: trimbeltmax27kft@gmail.com

Neser Group Kft.

H-4030 Debrecen, Vágóhíd u. 3.

Tel./Fax: +36(52) 420-960

e-mail: info@nesergroup.eu

www.blokksystem.hu